

# Closed End Rivets

Exclusive rivet design featuring a cup shaped end configuration ideal for applications that need to be water tight or when stem retention is paramount.



## Key features and benefits

- Seals out moisture, air and other contaminants
- Higher tensile and shear strength than the equivalent open end rivet
- 100% stem retention



Blindside set view

## Specifications

Sizes:

1/8" – 1/4"

(3.2 mm – 6.4 mm)

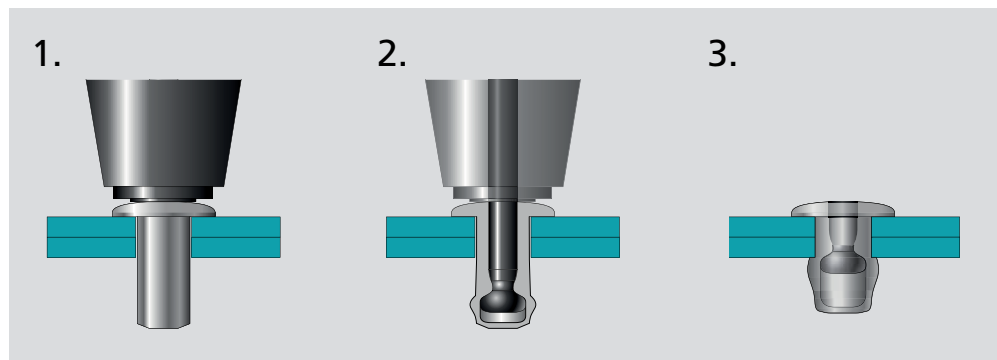
Materials:

Aluminum, Steel,  
Stainless Steel

Head Styles:

Dome, Countersunk

## Typical placing sequence



Please visit our website for fastener placing animations and technical data.

## Assembly applications

- White goods
- Electronic enclosure
- Signs
- Outdoor cases
- Scoreboards
- LED signs
- Recreational vehicles

White goods



Lawn and garden



School bus



Electronic enclosure



Electronic switch



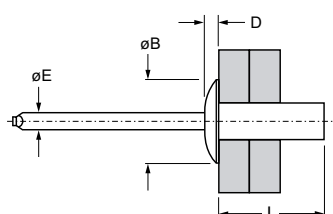
Sunroof





English	Français	Deutsch	Italiano	Español
Body: Aluminum* Natural	Corps: Aluminium* Brut	Hülse: Aluminium* Blank	Corpo: Alluminio* Nessuna finitura	Cuerpo: Aluminio* Natural
Stem: Steel Protective coating	Tige: Acier Revêtement de protection	Dorn: Stahl Schutzüberzug	Gambo: Acciaio Rivestimento protettivo	Vástago: Acero Revestimiento preservador

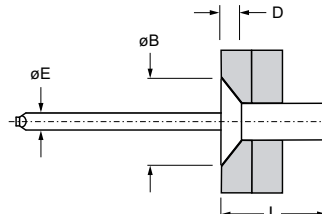
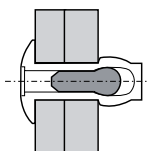
\* 5056



**AD H**

Dome head

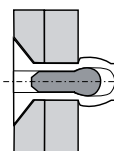
Tête bombée / Flachrundkopf /  
Testa tonda / Cabeza alomada

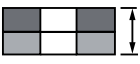



**AK H**

Countersunk

Tête fraisée / Senkkopf /  
Testa svasata / Cabeza avellanada

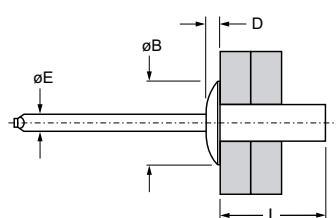


ø nom.					øE ref.	AD H			AK H				
	min.	max.	min.	max.		L ref.	øB max.	D max.	Part No.	L ref.	øB max.	D max.	Part No.
1/8" (3.2)	.032 (0.8)	.062 (1.6)	.129 (3.28)	.133 (3.38)	.064 (1.6)	.237 (6.0)	.248 (6.3)	.051 (1.3)	AD 41 H	.277 (7.0)	.245 (6.3)	.055 (1.4)	AK 41 H
	.063 (1.6)	.125 (3.2)				.301 (7.7)			AD 42 H	.341 (8.7)			AK 42 H
	.126 (3.2)	.187 (4.8)				.362 (9.2)			AD 43 H	.402 (10.2)			AK 43 H
	.188 (4.8)	.250 (6.4)				.425 (10.8)			AD 44 H	.466 (11.8)			AK 44 H
	.251 (6.4)	.312 (7.9)				.487 (12.4)	AD 45 H		.528 (13.4)	AK 45 H			
	.313 (7.9)	.375 (9.5)				.550 (14.0)	AD 46 H		.591 (15.0)	AK 46 H			
	.376 (9.5)	.500 (12.7)				.675 (17.2)	AD 48 H						
5/32" (4.0)	.063 (1.6)	.125 (3.2)	.160 (4.06)	.164 (4.17)	.086 (2.2)	.315 (8.0)	.327 (8.4)	.066 (1.7)	AD 52 H	.370 (9.4)	.327 (8.4)	.065 (1.7)	AK 52 H
	.126 (3.2)	.187 (4.8)				.377 (9.6)			AD 53 H	.432 (11.0)			AK 53 H
	.188 (4.8)	.250 (6.4)				.440 (11.2)			AD 54 H	.495 (12.6)			AK 54 H
	.251 (6.4)	.312 (7.9)				.502 (12.8)			AD 55 H	.558 (14.2)			AK 55 H

dimensions in inches and (mm) / en pouces et (millimètre) / alle Maße in Zoll und (mm) / in pollici e (millimetri) / en pulgadas y (milímetros)

## Closed End AD H / AK H Series

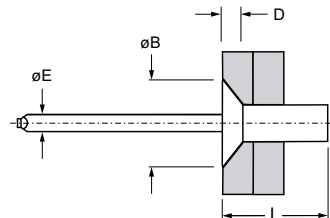
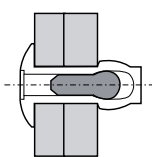
### Aluminum / Steel



**AD H**

Dome head

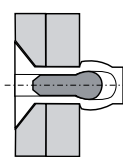
Tête bombée / Flachrundkopf /  
Testa tonda / Cabeza alomada





**AK H**

Countersunk

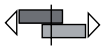

Tête fraisée / Senkkopf /  
Testa svasata / Cabeza avellanada



Ø nom.					ØE ref.	AD H				AK H			
	min.	max.	min.	max.		L ref.	ØB max.	D max.	Part No.	L ref.	ØB max.	D max.	Part No.
3/16" (4.8)	.063 (1.6)	.125 (3.2)				.330 (8.4)			AD 62 H	.395 (10.0)			AK 62 H
	.126 (3.2)	.187 (4.8)				.392 (10.0)			AD 63 H				
	.188 <sup>1)</sup> (4.8)	.250 (6.4)				.455 (11.6)			AD 64 H	.520 (13.2)			AK 64 H
	.251 (6.4)	.312 (7.9)	.192 (4.88)	.196 (4.98)	.104 (2.6)	.517 (13.1)	.393 (10.0)	.081 (2.1)	AD 65 H	.395 (10.1)	.075 (2.0)		
	.313 <sup>2)</sup> (7.9)	.375 (9.5)				.580 (14.7)			AD 66 H	.645 (16.4)			AK 66 H
	.376 (9.5)	.500 (12.7)				.705 (17.9)			AD 68 H				
	.501 (12.7)	.625 (15.9)				.865 (22.0)			AD 610 H				
1/4" (6.4)	.126 (3.2)	.250 (6.4)	.257 (6.53)	.261 (6.63)	.144 (3.7)	.485 (12.3)	.525 (13.4)	.099 (2.6)	AD 84 H				
	.251 (6.4)	.375 (9.5)				.610 (15.5)			AD 86 H				

dimensions in inches and (mm) / en pouces et (millimètre) / alle Maße in Zoll und (mm) / in pollici e (millimetri) / en pulgadas y (milímetros)

1) AK 64 H: .126 (3.2) 2) AK 66 H: .251 (6.4)

Ø nom.		
	lbf (kN) <sup>1)</sup>	lbf (kN) <sup>1)</sup>
1/8" (3.2)	305 (1.36)	385 (1.71)
5/32" (4.0)	430 (1.91)	605 (2.69)
3/16" (4.8)	575 (2.56)	840 (3.74)
1/4" (6.4)	900 (4.00)	1100 (4.89)

1) typical values / valeurs moyennes / typische Werte /  
Valori tipici / valores típicos